



PLANNED EDEMIC BOMBSHELL!

CDC INFLATING COVID INFECTION RATES UP TO 16 TIMES

Federal order counts probable cases as confirmed

Infowars.com - JUNE 30, 2020

NEW Probable Case Definition

Confirmed Case

New case status definitions:

- Test positive patient with no signs/symptoms
- Confirmed probable case with symptoms

TOTAL CASES: 17
(3 CONFIRMED)
(16 PROBABLE)

BANNED.VIDEO



AISHA SOURI
 COLLIN COUNTY
 EPIDEMIOLOGY
 DEPARTMENT

During a May 18, 2020 meeting between the Collin County, Texas Commissioners Court, officials detailed a new method for counting COVID-19 cases.

Infowars' Alex Jones and Rob Dew break down the footage, along with other evidence, showing the State of Texas and others are being directed by the CDC to inflate infection numbers.

Ladies and gentlemen, this is the smoking gun when it comes to the coronavirus hoax.

At the Collin County meeting, Aisha Souri of the county's epidemiology department explained how the state's revised definition for COVID-19 probable cases allows for those labeled as "probable" carriers to be counted as "confirmed cases."



COLLIN COUNTY

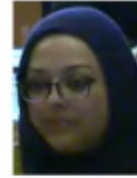
collincountytx.gov

May 18, 2020 Commissioners Court



New Case Definition

- Confirmed case definition
 - No change in case definition
 - Need a positive PCR lab result for COVID-19
- **NEW** Probable case definition:
 - FDA approved positive lab with or without symptoms
 - Close contact with confirmed or probable cases
- **NEW** Case definition for deaths related to COVID-19
 - COVID-19 is listed on the death certificate as a cause of death
 - PCR positive lab result for COVID-19 is no longer required



AISHA SOURI
COLLIN COUNTY
EPIDEMIOLOGY
DEPARTMENT

BANNED.VIDEO



“So, for a confirmed case it stays the same, you still just need PCR [lab results]. But, now they’ve added a probable case definition. So, that still gets counted towards the case count. It’s different, it’s not ‘confirmed,’ it’s ‘probable,’ but it’s still a case,” she said.

Souri continued, “Meaning, if you use another testing method, not PCR, and if you have close contact with a confirmed or probable case – and if you did that lab work that was not a PCR you could be considered a case with or without symptoms.”



COLLIN COUNTY

collincountytx.gov

May 18, 2020 Commissioners Court



NEW Probable Case Definition

- A probable case of COVID-19
 - Has a positive laboratory test AND either of the following criteria:
 - Close contact with a case



Meaning a case is classified as probable if an individual can fit into:

- YELLOW box AND BLUE box (without GREEN box)
- OR
- YELLOW box AND GREEN box (without BLUE box)
- OR
- BLUE box AND GREEN box (without YELLOW box)*

*Yellow box is sufficient to classify as a probable case**

There are 22 different systems for a person to be classified as a probable case

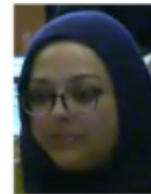
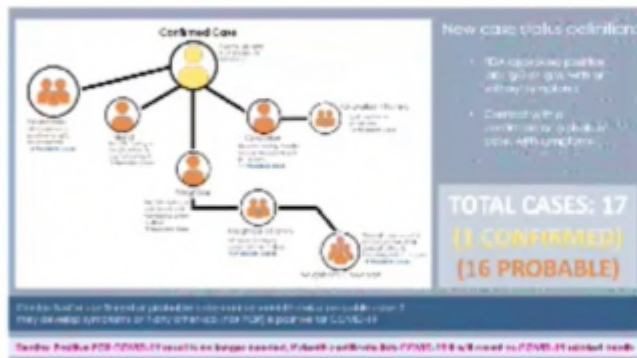


AISHA SOURI
COLLIN COUNTY
EPIDEMIOLOGY
DEPARTMENT

BANNED VIDEO

In another segment of the video, the epidemiologist went over a diagram showing how one “confirmed” COVID case who had contact with sixteen individuals would be counted as a total of 17 COVID cases by the CDC under the new “probable case definition.”

NEW Probable Case Definition



AISHA SOURI
COLLIN COUNTY
EPIDEMIOLOGY
DEPARTMENT

BANNED VIDEO

CDC/NIH document shows new definition for “Probable Case Definition” for COVID-19.

Next, Collin County Judge Chris Hill said the state of Texas “elected to adopt this new probable definition.”

He went on to describe how people with minor symptoms will now be counted as actual COVID cases, saying, “If you have a subjective fever and you have a headache, and you live in Collin County, you now meet the qualifications to be a probable COVID patient. It is remarkable how low the standard is now.”

“If you have one of the major symptoms, you have a cough or you have shortness of breath, and you live in Collin County, then you can satisfy the definition for a probable COVID case,” he noted. “But I’m very concerned that we absolutely could see the numbers jump very rapidly in a way that is actually not indicative of what we’re seeing here in the community in the Public Health Department.”

The definition for COVID deaths was also updated, as Sauri told the Collin County Commissioners Court, “previously, prior to this definition, it was only if you had a positive PCR result that you would be counted as someone who died related to COVID-19. But now, lab testing is no longer required to be counted towards that.”

Meanwhile, coinciding with this artificial inflation of COVID-19 cases, mainstream media is hyping up the “second wave” of coronavirus, even claiming it will be “[10 times more infectious](#)” than the first round.

David Knight is broadcasting live to cover this breaking story and others!